

COMMITTEE OF THE WHOLE

Monday, April 7th, 1975  
Committee of the Whole - 9:30 p.m.

The Council of the District of Coquitlam met as a Committee of the Whole at 9:30 p.m. on April 7th, 1975 in the Council Chambers of the Municipal Hall, 1111 Brunette Avenue, Coquitlam, B.C. with all Members of Council present. Also in attendance were the Municipal Manager, Municipal Solicitor, Planning Director, Municipal Engineer, Personnel Officer, Parks and Recreation Director, Deputy Municipal Clerk and Recording Secretary, Mrs. Colleen Kaczan.

The meeting was called for the purpose of dealing with the urban residential development of 314 acres of land at Riverview.

COMMITTEE OF THE WHOLE

MOVED BY ALD. GARRISON  
SECONDED BY ALD. HOWARTH:

That Council apply for a Regional Plan Amendment to re-classify the area from RSV-2 (Long Range RSV) to URB-1 (Long Range URB) and that Council give notice that it will withdraw this request if full Provincial approval of Mayfair Industrial Park and Nu-West Industrial Park and acceptance by the Province of the principle of full municipal participation in planning the highway and transit access to this area are not secured prior to consideration by the GVRD Planning Committee of this application.

CARRIED UNANIMOUSLY

MOVED BY ALD. SEKORA  
SECONDED BY ALD. GARRISON:

That recognizing the need for jobs in this area and in particular the Barnet Corridor where existing substantial residential development is planned that we request that the Provincial Government give their immediate assurance that the proposed regional town centre for the Coquitlam area will be located within the boundaries of the District of Coquitlam.

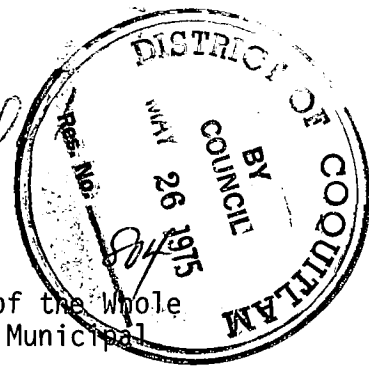
CARRIED

Alderman Filiatrault registered opposition.

The meeting adjourned at 10:00 p.m.

\_\_\_\_\_  
CHAIRMAN

Tuesday, May 6, 1975  
COMMITTEE OF THE WHOLE - 3:30 p.m.



The Council of the District of Coquitlam met as a Committee of the Whole at 3:30 p.m. on May 6, 1975 in the Council Chambers of the Municipal Hall, 1111 Brunette Avenue, Coquitlam, B.C.

Present were all members of Council save Ald. Gilmore and Ald. Filiatrault. Also present were the Municipal Manager, Director of Planning and the Deputy Municipal Clerk.

COMMITTEE OF THE WHOLE

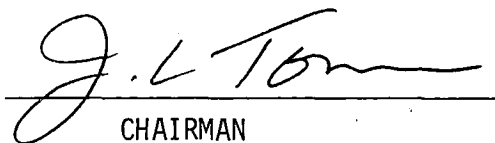
The purpose of the meeting was to hear from a representative of Public Works of Canada on the subject of establishment of a Letter Carrier Depot in the District of Coquitlam.

Representing the Department of Public Works was Mr. D. E. Fleischer and representing the Post Office was Mr. W. F. Mulligan.

Mr. Fleischer gave a slide presentation on what a Postal Depot was and explained that what was proposed in Coquitlam was a 5500 square foot building to service 15 walks on a one-half acre site and the site presently being examined was 215 Marmont Street.

The Mayor suggested that the Department of Public Works look at a site on Brunette Avenue at Begin Street.

The meeting adjourned at 4:00 p.m.

  
CHAIRMAN

7 8  
1481

1 2 3 4 5 6 7  
P 1481  
N 61' A  
S 61' A

10 9  
AVE  
1481

P W P 11919  
18 1/2 B C 15 14 13 12  
1481  
B 15151  
C P

17709  
B  
P C

1 2 3 4 5 W E 6  
1/2 1/2 7 8 9  
1481

SK 8960  
S 1/2 S 1/2  
10 9

P N 95 W E W E  
18 1/2 1/2 1/2 1/2  
REM 17 16 15 14 13 12 11 10  
1491  
W E  
1/2 1/2

1 2 3  
P 1481

1 2 3 1 2 3 4 18 P  
P 1481 P 2732  
P 17  
21375  
16

1481 N 1/2  
6 5 4  
P S 1/2

P 1481 P  
6 5 4 12 11 10 9 W E  
1/2 1/2 7  
2732  
JAMES AVE.  
8 8

20736  
7 A B  
AVE

111 112 24 1/2 8  
E P 49 1 2 32 P 10 19 P 1 35 2 3  
REM 13  
98 97 96  
P 874

P 2624 S 78 25  
5 4 3 2 1  
CARTIER  
10968  
3

N 78'  
8 P  
2624  
REM 8  
SK 3377  
A A A A  
P P P P  
15656  
10  
15556  
B  
2,356  
R  
10,220  
2  
QUADLING AVE.

40  
P 31201

B REM. A 9074  
P 22519 SK  
REM P 14 2624

A 6 B  
P 13560

A 15 B  
P 13560

5  
P 2624

P A 16 B 13560  
C 13560

A 4 B  
P 13560

P A 17 B 13560

3  
P 2624 SK 50  
11768 3

SK 7734 P 2624  
6528  
19

P 2624  
1 2

P 1 2

W PT 7  
2624  
E PT 7  
7,34  
2624  
8 B  
21615  
A  
B  
P C

3 2

1 W E  
P 1/2 1/2  
6871 7 7 8 9  
2 P 2624  
EX P 5814  
B P 2624

5

4

N 50'  
P 2624

A  
EP 1786  
REM 1 2  
P 2624  
3 12  
2624

BEGIN ST.  
24 B  
3 4  
P 37420

9  
10  
13

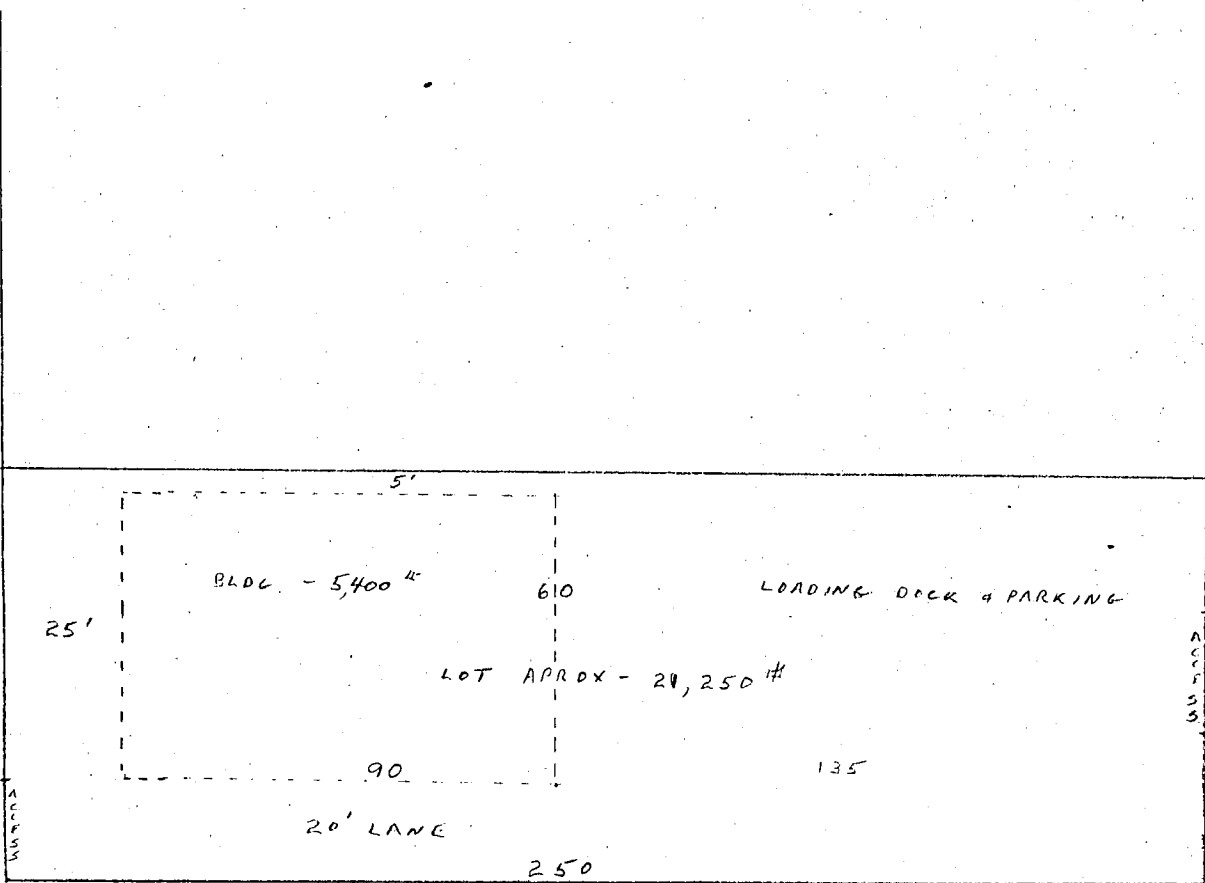
1 1531  
2  
3  
4  
5  
6  
7  
8  
58

1A  
2A

WARD RD.

CORUITLAM L.C.D.

2  
1  
5  
M  
A  
R  
A  
M  
O  
N  
T



T  
H  
E  
R  
R  
I  
E  
N  
S  
T.

1" = 40'

MUN. HALL