

DISTRICT OF COQUITLAM NEWSLETTER

NOVEMBER, 1977 COQUITLAM MUNICIPAL HALL 1111 BRUNETTE AVE., COQUITLAM, B.C. V3K 1E8



Remembrance Day Services will be held in Coquitlam on November 11th, under the auspices of the Coquitlam Branch of the Royal Canadian Legion. The program starts with a service at Winslow School at 9:30 a.m. followed by the march to the Cenotaph at Blue Mountain Park (above photo) where a Memorial Service will be held at 10:45 a.m. and two minutes silence at 10:58 a.m. This will be followed by a march past at the Legion Hall, 1025 Ridgeway at about 11:15 a.m.

New Health Care Program Goes Into Effect Soon

Effective January 1, the Simon Fraser Health Unit will be responsible for the operation, in Coquitlam, of a new comprehensive long-term care program, financed by the Provincial Government.

The main purpose of the program is to assist people in need of long-term care to remain in their own homes as long as possible. They will be provided with homemaker service and other forms of home care through the Health Unit and the Red Cross Homemaker Society until it becomes necessary to move them to a personal, intermediate or extended care facility.

The per day rate for persons requiring accommodation in a facility will be only \$6.50, regardless of the level of care required.

Details of how the program will operate will be announced in the newspapers in the middle of December. The Simon Fraser Health Unit does not expect to have the precise details of the program until that time.

Coquitlam Election Day Saturday, November 19

A record 23,626 residents are eligible to vote in the Coquitlam municipal elections Saturday, November 19th.

There will be voting for the office of Mayor, three aldermanic seats, Coquitlam's representative to the Greater Vancouver Regional District, three school board seats and a \$4.7 million roads improvement referendum.

Terms - for Mayor and Aldermen are for two years - for School Trustee are two seats for two years and one seat for one year.

The candidate elected to the GVRD must also be a member of the municipal council.

Approval of the roads referendum (see separate article on the referendum in this newsletter) requires a simple majority of the votes cast.

An advance poll for eligible voters will be held at the clerk's office at Municipal Hall, 1111 Brunette Avenue on November 16th from 8 a.m. to 8 p.m. This poll is for voters who will be out of the municipality on election day.

On election day, Saturday, November 19th, there will be a total of 28 polling stations in Coquitlam, all of them open from 8 a.m. to 8 p.m.

Voters may cast their ballots at any of the 28 polling stations which are located at:

Alderson Avenue School - 800 Alderson Avenue
Austin Heights School - 1010 Austin Avenue
Baker Drive School - 885 Baker Drive
Brookmere School - 516 Brookmere
Burquitlam School - 550 Thompson Avenue
Cape Horn School - 155 Finnigan Street
Cedar Brook School - 2541 Quay Place
Christmas Manor - 560 Austin Avenue
Foyer Maillard - 1010 Alderson Avenue
Glen School - 3064 Glen Drive
Harbour View School - 960 Lillian Street
Hillcrest School - 2161 Regan Avenue
Leigh School - 1230 Soball Road
Lord Baden Powell School - 450 Joyce Street
Meadowbrook School - 900 Sharpe Street
Miller School - 800 Egmont Avenue
Millside School - 1432 Brunette Avenue
Montgomery School - 380 Montgomery Street
Mountain View School - 699 Robinson Street
Municipal Hall - 1111 Brunette Avenue
Mundy Road School - 2200 Austin Avenue
Parkland School - 1563 Regan Avenue
Porter Street School - 827 Porter Street
R.C. McDonald School - 2550 Leduc Avenue
Ranch Park School - 2701 Spuraway Drive
Rochester Elementary School - 411 Schoolhouse Street
Roy Stibbs School - 600 Fairbiew Street
Vanier School - 1600 King Albert Avenue

1977 COQUITLAM COUNCIL

Mayor J.L. Tonn
Ald. L.A. Bewley
Ald. Les Garrison
Ald. Margaret Gregory
Ald. J.M. Parks
Ald. B.T.H. Robinson
Ald. Lou Sekora

MUNICIPAL OFFICIALS

Municipal Manager	R.A. LeClair
Municipal Clerk	T. Klassen
Treasurer and Collector	V.A. Dong
Municipal Engineer	Alan Phillips
Fire Chief	B.H. Falcon
RCMP Officer In Charge	Insp. M.A. Young
Medical Health Officer	Dr. F.J. Blatherwick
Planning Director	D.M. Buchanan
Parks & Recreation Director	D.L. Cunnings
Solicitor	H.G. Castillou
Personnel Director	F.J. Klewchuk

Flu Vaccine Is Available

Influenza vaccine is again available, without charge, to the elderly and persons with certain chronic diseases.

The vaccine will protect against the two types of influenza that are expected to be prevalent this winter (A-Victoria and B-Hong Kong). The Swine influenza vaccine which caused considerable controversy last fall, is not included.

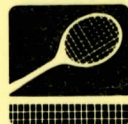
You may obtain the vaccine either through your private doctor or through the regular clinics at the Simon Fraser Health Unit, including the Coquitlam office at 644 Poirier.

The vaccine will also be offered to people in personal, intermediate and extended care homes.

New Tennis Courts

The municipality is constructing four new tennis courts, possibly with lighting, near Pipeline Road and Ozada Avenue, the Lefarge park area.

Construction will likely be finished by the end of this year.



Pre-schoolers find lots to keep them busy, and happy, in 'art experience' class at the Place des Arts. The centre, operated by the municipality, offers programs for people of all ages.

Help for Speech Problems

Many parents assume that their children will somehow learn to talk without any help. But for some youngsters it's not that easy. They need special attention to guarantee that their language skills will be developed to the maximum.

To assist children who encounter a speech, language or voice problem, the Simon Fraser Health Unit has a speech pathologist who is trained in providing treatment designed to overcome these difficulties.

The community service is offered free to the public. Information is available by phoning the Health Unit's Coquitlam office at 936-3441.

Individuals must be referred to the

program by a community health nurse or the family doctor.

While most children do not need any special attention to learn to talk, others do. A speech pathologist may be helpful if a child is not talking at all by two years of age, if his speech is largely unintelligible after three years of age, if he is leaving off many beginning consonants, if he uses mostly vowel sounds in his speech at any time after one year of age or if he is noticeably non-fluent, for example, stuttering after the age of five years.

Parents who suspect their pre-school children may have a speech problem are advised to do something about it at once. Don't wait.



Peaceful spot at Coquitlam's Munday Lake.

Residents to vote on Roads Referendum

On November 19th, Coquitlam residents will be asked to approve a \$4.7 million roads improvement referendum, a measure that has the unanimous endorsement of the Municipal Council.

Included in the referendum is the improvement of four major traffic links to arterial standard in the municipality and the reconstruction of 10 local roads.

(A pamphlet containing more detailed information about the referendum will be delivered to voters shortly).

The four major projects will cost an estimated \$3.2 million and the pavement reconstruction projects an estimated \$1.5 million. These figures include finance charges.

Approval of the referendum will reduce the annual maintenance work on the streets in the program permitting re-assignment of manpower to improve maintenance of other streets throughout the District, because the roads in the referendum are in poor shape requiring continual patching and repairing.

On a Coquitlam home with a market value of about \$60,000 the additional tax required to finance the referendum will be approximately 50 cents per month in 1979 and rise to approximately \$2.20 per month in the peak year of 1983. After that the figure will decline each year.

In the case of the 10 pavement reconstruction projects, only the existing pavement will be reconstructed. The pavement will not be widened nor will additional services be added.

This is in keeping with the municipality's policy of retaining these roads for local use.

All 10 of the pavement reconstruction projects are on bus routes.

Approval of the referendum requires a favourable vote from the majority of the votes cast.

Here is a list of the projects included in the referendum:

MAJOR RECONSTRUCTION PROJECTS:

A. BRUNETTE AVENUE - Largest single project in the program. From WOOLRIDGE TO MARMONT, south-side pavement would be widened and curb, gutter and sidewalk built; from MARMONT TO LAURENTIAN CRESCENT, pavement widened to 46 feet (four lanes), curbs, gutters and sidewalks on both sides, street lighting, where required.

B. CLARKE ROAD, FROM COMO LAKE AVENUE TO INGERSOLL AVENUE - Pavement widened to 46 feet (four lanes), curbs, gutters, sidewalks on both sides and street lighting, where required.

C. COMO LAKE, FROM NORTH ROAD TO CLARKE ROAD - Pavement widened to 46 feet (four lanes), curbs, gutters and sidewalks on both sides, storm sewer, street lighting, where required.

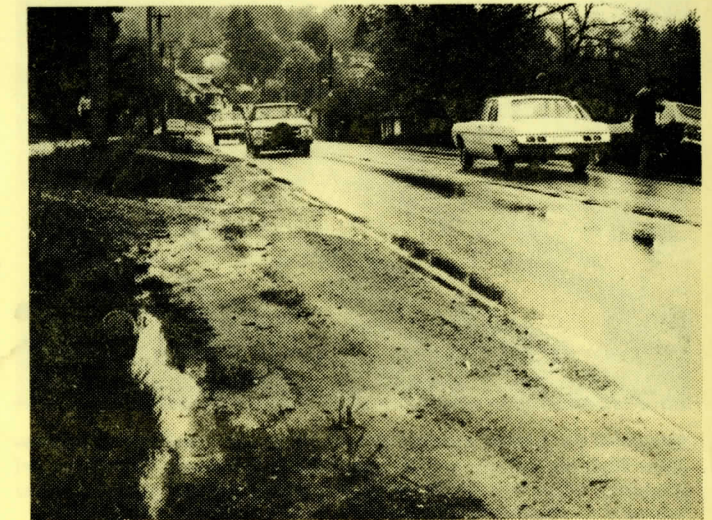
THE PRESENT PROHIBITION AGAINST COMO LAKE TRAFFIC CROSSING CLARKE WILL BE CONTINUED.

D. RIDGEWAY PARKING MALL, NELSON STREET TO MARMONT - Pavement widening to include angle parking stalls on both sides to accommodate 107 cars, curbs, sidewalks, street lights, planters, and other miscellaneous improvements.

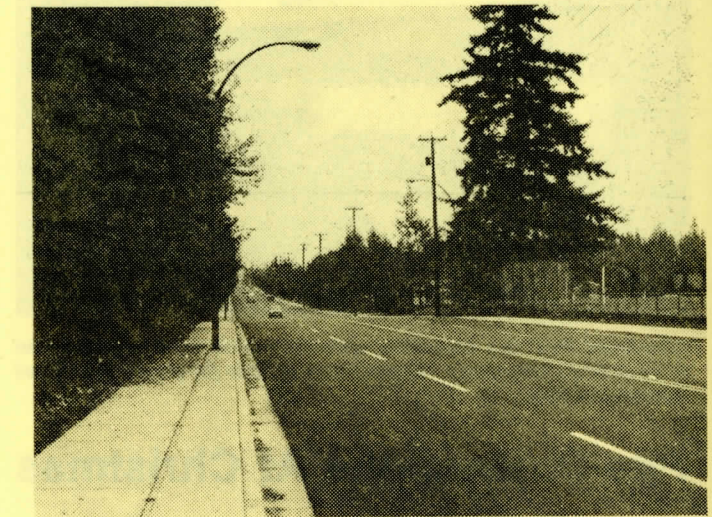
PAVEMENT RECONSTRUCTION PROJECTS

(Reconstruction of existing pavement only)

1. Como Lake Avenue from Emerson (just east of Clarke) to Schoolhouse.
2. Como Lake Avenue from Poirier to Spuraway.
3. Ranch Park Way from Spuraway to Norman.
4. Norman from Ranch Park Way to Dewdney Trunk.
5. Foster Avenue from Blue Mountain to Porter.
6. Foster Avenue from Gatensbury to Schoolhouse Avenue.
7. Foster Avenue from Poirier to Linton.
8. Cottonwood Avenue from Fairview to Robinson.
9. Dewdney Trunk from Scott Creek to Irvine Street.
10. Cape Horn Avenue from Brunette to Mundy.



Major project in the November 19th roads referendum is the improvement of Brunette Avenue (above photo) by widening the pavement and adding sidewalks, gutters and improved street lighting. It would look similar to section of Blue Mountain Street shown in photo below.



Development of a major athletics facility is planned for Mackin Park which is being extended in size to 15 acres. A football-rugby field, adult softball field, more tennis courts, dressing rooms, parking and renovation of the existing Little League baseball diamond are included in the program. Photo shows a sign erected on the site.

Keep Poisons Away From Youngsters

Last year close to 7,000 poisonings were reported in B.C. and about one-third of them were children four years old and younger.

Dozens of youngsters from this area were treated at local hospitals for poisoning.

Parents should make sure that children cannot reach pills, varnishes, cleaning fluids, pesticides, paint or other substances that are often easily accessible around the house.

They should be placed out of reach of children or kept in a locked cupboard.

A child who swallows a toxic substance should be taken to the nearest hospital as quickly as possible. The label from the substance should also be taken to the hospital to assist in determining treatment.



Shopping Hours

The Municipality of Coquitlam does not regulate retail shopping hours.

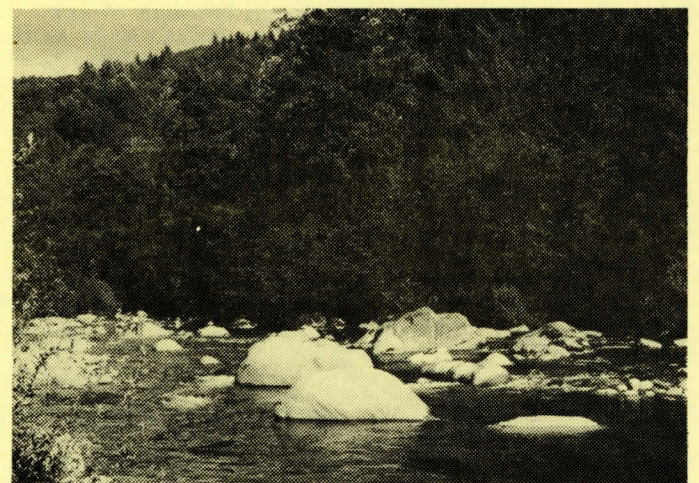
Because there is no municipal by-law requiring them to close at any particular hour or any particular day or days of the year, owners of retail shops (including barber shops and hairdressing or beauty parlors) set the hours which best suit their individual circumstances and locations.

The regulation of retail shopping on Sundays, however, is covered by Federal statute and does not come within a Municipal Council's powers of legislation. The Provincial Attorney-General's department is responsible for administering Sunday shopping regulations.

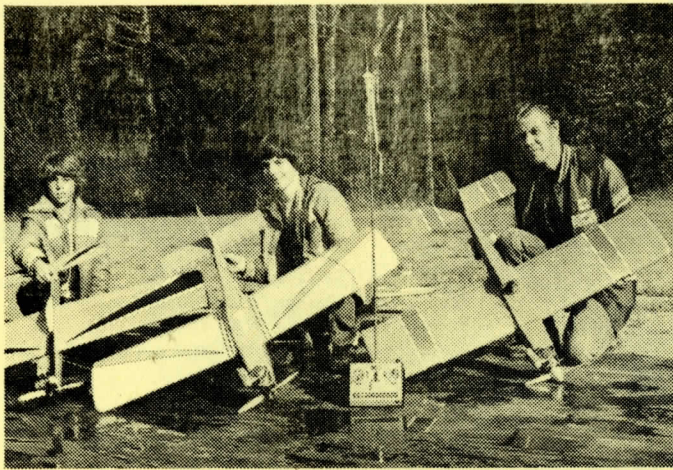
Emergency . . . ! Move Over

Citizens are reminded that it is mandatory to pull over to the right-hand side of the road and stop when a vehicle making an emergency run approaches.

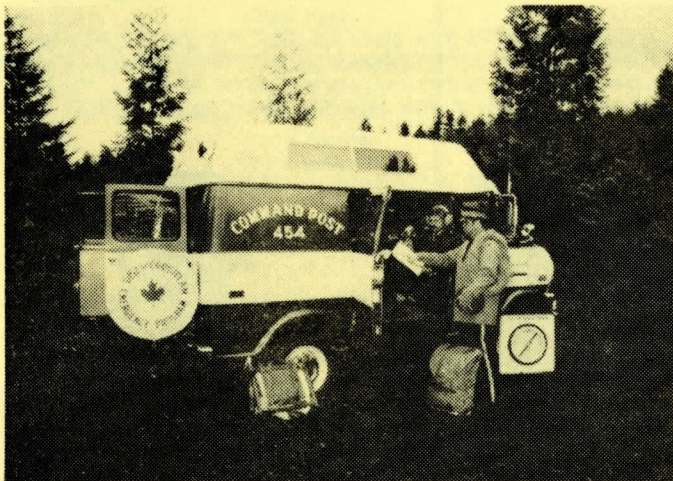
A fire truck travelling at 45 miles an hour requires 200 feet to come to a full stop and while drivers are highly experienced and have fast reflexes, manoeuvring an 18-ton vehicle through heavy traffic requires a great deal of skill and a lot of co-operation from other drivers on the road. When a vehicle on an emergency run approaches . . . move over please.



Coquitlam River.



Scheduled for official opening this month is the new Upper Coquitlam River Park, one of only two parks in Greater Vancouver built for model airplanes. There is a landing strip for radio controlled planes and two 'cassettes' for fixed controlled craft.



'Command Post' is a Coquitlam operated vehicle used by authorities to co-ordinate emergency measures such as those for ground search and rescue operations.

Fire Precautions At Christmas

It won't be long before the Christmas holiday season arrives . . . a happy time but also a time when special precautions should be taken to prevent fires in the home.

Particular attention should be given to Christmas trees. Tree butts should be recut 1 inch or more above the original cut. It should be kept in water to assure full moisture content . . . check the water level daily.

Check tree lighting sets and extension cords for frayed wires, loose connections and broken sockets. Turn off all tree and indoor holiday lighting before going to bed or leaving the house.

Fire retardant solutions for trees are available at retail stores.

Toys operated by alcohol, kerosene or gasoline can be extremely dangerous and electrical toys should be listed by Underwriter's Laboratories or CSA to show they have met shock and fire hazard standards.

