

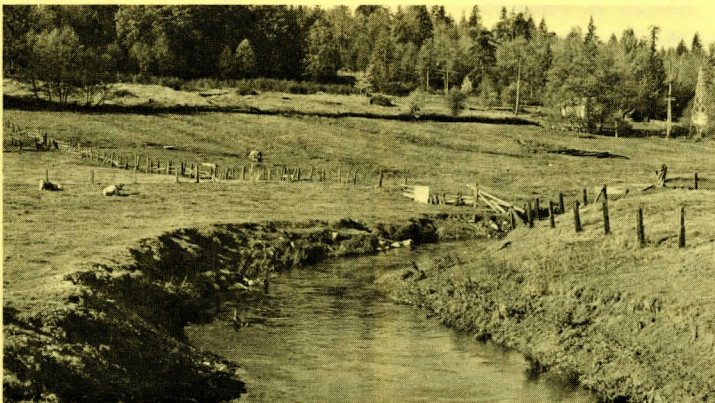
DISTRICT OF COQUITLAM NEWSLETTER

NOVEMBER, 1973

COQUITLAM MUNICIPAL HALL

1111 BRUNETTE AVENUE, COQUITLAM, B.C.

COQUITLAM ELECTIONS NOVEMBER 17



Two tranquil scenes, Coquitlam River (top) and Scott Creek (bottom). But they aren't always this way. Both are subject to flooding. Flood control studies are being carried out.

Coquitlam residents will go to the polls Saturday, November 17, to elect a mayor, three aldermen, two school trustees, the municipality's regional district director and to vote on a \$1.9 million parks and recreation referendum.

(See separate articles on the referendum and election of regional district director.)

Only property owners are eligible to vote on the referendum.

A record 20,851 citizens - 19,815 of them property owners - are on the current voters' list.

The election is several weeks earlier than in the past when local voting was held in December. Legislation introduced earlier this year changed the municipal election date throughout B.C. (except Vancouver) to the third Saturday in November.

Polling stations are located at the Municipal Hall and all elementary schools in Coquitlam except Coronation Park. Polls are open from 8 a.m. to 8 p.m. An advance poll, for voters who will be away on election day, will be held in the Municipal Hall on Wednesday, November 14, from 8 a.m. to 8 p.m.

When voting, please use the pencil provided in the polling booth. If you make an error when marking your ballot, return the ballot to the election staff and you will be given a new one . . . do not erase a mark on your ballot, obtain a new one.

Municipality Seeks Assessment Changes

Coquitlam Municipality has urged the Provincial Government to replace the complicated and confusing property assessment regulations that exist in British Columbia with regulations that are more understandable and fair.

It has also suggested that consideration be given to legislation that would allow municipalities to set different mill rates for different types of properties. At present a common mill rate must be applied to all properties (residential, commercial, industrial,

vacant land, etc.).

The Municipality's position has been endorsed by the Greater Vancouver Regional District (the metropolitan area's regional government).

The Provincial Government has brought in changes to assessment regulations in 1966, 1968, 1971 and 1973. Some of the changes put restrictions on how certain types of property were to be assessed, thereby destroying the basic objective of relating assessment to actual market value on pro-

perty.

The Municipality has called for single, province-wide assessment regulations that would scrap present inequities; a simple and understandable assessment notice which would indicate actual market value only; elimination of legislation that results in some types of property not being assessed on market value; consideration of legislation which would allow municipalities to set different mill rates for different types of properties.

1973 COQUITLAM COUNCIL

Mayor J.L. Tonn

Ald. L.A. Bewley Ald. S.W. Hofseth
Ald. R.E. Boileau Ald. J.E.M. Robinson
Ald. J.W. Gilmore Ald. R.B. Stibbs

MUNICIPAL OFFICIALS

Municipal Manager R.A. LeClair
Municipal Clerk F.L. Pobst
Treasurer and Collector V.A. Dong
Engineering Director H.F. Hockey
Assessor A.R.C. Wyatt
Fire Chief B.H. Falcon
Judge F.C. Giles
Medical Health Officer Dr. J.D. Munroe
Parks and Recreation Director D.L. Cunnings
Planning Director D.M. Buchanan
RCMP Officer in Charge Sub/Insp. M.A. Young
Social Welfare Administrator J.B. Thomson
Solicitor D.C.E. Simm

Parks, Recreation Vote

Provincial and Federal government grants estimated at \$969,000 are anticipated for the \$1.9 million parks and recreation referendum which will be submitted to Coquitlam ratepayers with the November 17 municipal elections.

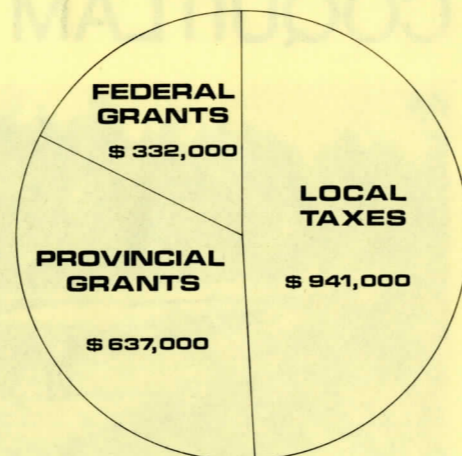
Provincial grants of \$637,000 have been promised toward the referendum. Provincial funds for municipal recreation facilities became available only this year. Grants are also made toward senior citizens centres, like that included in the referendum. Federal grants of \$332,000 are possible for the proposed Maillardville Park.

The grants would reduce the net amount of the referendum to \$941,000.

Included in the referendum is a new ice surface (to be added to the Sports Centre), senior citizens centre, which would be built on lake Como, and the acquisition and redevelopment of parks.

A pamphlet with details of the parks and recreation program referendum is being distributed to property owners throughout the District.

On a Coquitlam home with a current market value of \$40,000 the additional tax required to finance the referendum would be approximately \$3 in the year 1975. In the peak tax year of 1979 the amount would be \$6, after which it would decline annually.



Left, Children at Tyndall Park; top right, Blue Mountain Park; bottom right, Mundy Lake.

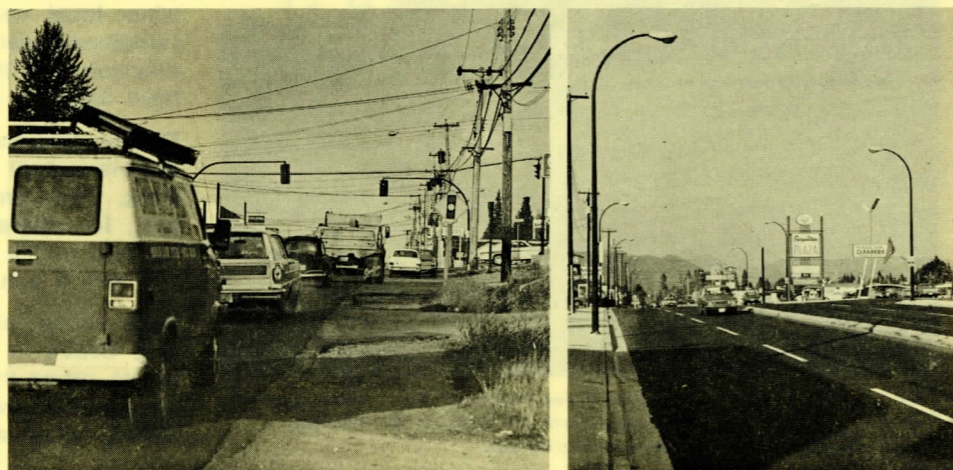
Voters Elect GVRD Director

You'll find something new on the ballot when you vote in the municipal election Saturday, November 17 . . . the position of Greater Vancouver Regional District Director for Coquitlam.

The GVRD is the metropolitan area's regional government. Under new provincial legislation, GVRD directors will now be elected to two-year terms, by the voters instead of being appointed by Council.

Coquitlam has one director of the GVRD Board.

In order to be elected to the GVRD Board, a candidate must also be elected to the Municipal Council. It is up to the individual candidate to decide if he, or she also wishes to run for GVRD director.



Traffic backs up on Austin Road (left), one of the roads being considered for improvement. Clarke Road (right) was improved this summer.

Public Input On Roads

Municipal Council has decided to seek public input on the question of road improvements in Coquitlam, before going ahead with a proposed roads referendum in the spring.

Initially it was planned to present an \$8.7 million referendum with the upcoming municipal elections, but it was deferred in order to get additional

public input on the proposal and to allow further time to seek senior government grants for roads.

At meetings to be held throughout the municipality the public will be asked to present views on road improvements, including suggestions for financing the improvements.

Meetings Set For Maillardville

Neighbourhood meetings will be held shortly to further encourage feedback from the public on plans for Maillardville.

Earlier this year an information and planning office called 'Plan Maillardville' opened at 946E Brunette Avenue to handle comments and questions from citizens. The Plan Maillardville staff has also been studying and reseraching existing conditions in the area as well as preparing plans for the future improvement of the neighbourhood.

The next step is public feedback at a series of meetings where people will be invited to present their views on the area's aspirations and requirements.

New Concept in Housing

The Planning Department has been working on a new concept for self-owned housing in the municipality, located at Dewdney Trunk Road and Irvine Street, in the Lower Ranch Park area, east of Scott Creek. The

concept is called 'zero lot line housing', and the proposed 176 lot subdivision is going ahead on a 19 acre site at a density of 9.1 homes to the acre compared to 4.6 homes or lower in conventional subdivisions.

Houses in the project will range from \$25,900 to \$38,950 in actual purchase price, as compared to new homes in other areas ranging from \$45,000 to \$50,000 and up.

The 'zero lot line' concept eliminates one side yard for each unit, and houses are placed right against the one side lot line. Maintenance of that wall is allowed for by means of an easement on the adjacent property. The actual design of the subdivision features cul-de-sacs with walkways between properties rather than sidewalks on the cul-de-sac roads. A small central park is the focal point of the walkway system.

Local Improvements

The municipality is spending \$1.4 million in its current local improvement road program in residential areas. The work consists of replacing unsightly open ditches with storm sewers, construction of concrete curbs and provision of pavement between the curbs.

Hospital in 1977

Architects will start work next year on drawings for the new Coquitlam and District Hospital and the project is expected to be completed in 1977.

Both the Provincial Government and the Greater Vancouver Regional District, which will share the cost of the structure, have approved the project.

The hospital, which will be located at the end of Burrard Inlet, in Port Moody, will initially consist of 150 acute care beds and a 75 bed extended care unit. In approving the development the government said it should not include obstetrical facilities though it "should be planned in such a way as to facilitate future expansion."

Foster Parents

There is a need in Coquitlam for more foster parents, particularly for teenagers and adolescents. Anyone who can help should contact the social service department, 939-9242.

Flat Rate For Water

Effective August 1, 1973 residential users are subject to a flat rate for water service provided within the municipality.

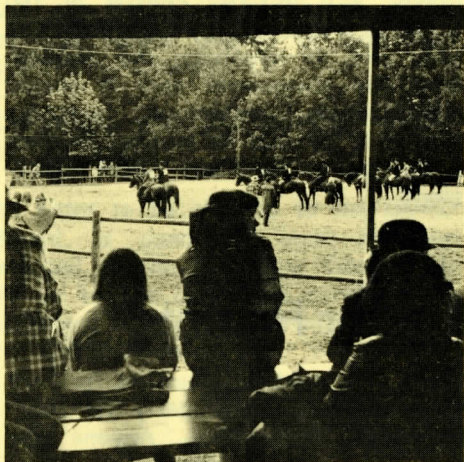
Under this new rate structure system, those on the flat rate will receive an annual bill in advance. Initial bills, covering a partial period August 1 to December 31, 1973, will be mailed in November, 1973.

Industrial and commercial properties as well as schools, municipal properties, churches and senior citizens' complexes will remain on meters and will continue to be billed quarterly.

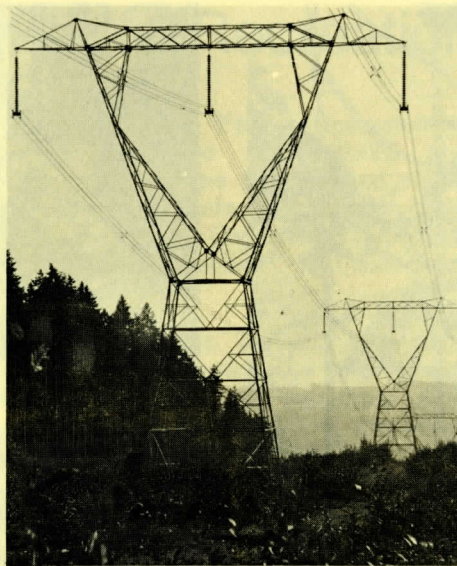
Prevent Burglaries

Every year hundreds of Coquitlam homes are broken into by burglars and valuable goods stolen. Many of these break-ins could have been prevented . . . here are some tips:

1. Never leave your home unlocked when it is not occupied; don't leave the front door unlocked even when you are in the backyard.
2. Make sure windows cannot be opened.
3. Don't advertise in the social columns that you are going on vacation; criminals can read too!
4. When out for the evening, leave an inside light on and perhaps a radio.



Equestrian Park, East Coquitlam



Coquitlam is supporting Greater Vancouver Regional District in efforts to have Hydro place transmission lines like this underground.

Condominium Policy

Municipal Council in September placed a one year moratorium on conversion of existing rental apartments to condominiums. This means that no existing rental apartments can be converted to condominiums - in which units are sold rather than rented - until at least September, 1974. After that date, conversions would still be subject to Council's approval.

Applications for the construction of new buildings as condominiums are being processed by the municipality, with various departments studying the proposal to be sure they comply with applicable regulations and requirements.

Home Care

Coquitlam has developed a 'home care project' to help release acute hospital beds by early discharge of selected patients from Royal Columbian and St. Mary's hospitals.

The project supplies many services, such as nursing care, physiotherapy, help of homemakers, dietary counselling, etc. These services are ordered by the doctor for the anticipated number of hospital days saved.

Many patients appreciate returning earlier to the care provided by the health unit staff in the familiar surroundings in which they live. Persons wishing this service should ask their doctor if early discharge from hospital can be arranged for them.

60,000 Books At Library

The Centennial Community Library - located in Centennial School - now has a collection of 60,000 books including French language books, paperbacks and Large Print books for the partially-sighted.

The library offers residents good value . . . it is a free public service. Your Coquitlam card can now be used at Douglas College Library and the Port Coquitlam branch of the Fraser Valley Regional Library as well.

A new feature this year is a comprehensive collection of automobile repair manuals. All the popular domestic and imported makes are represented and the manuals are available for consultation or photocopying at the library.

The library is open from 8 a.m. to 5 p.m. on Friday and 10 a.m. to 5 p.m. on Saturday.

Tennis Courts

Public tennis courts have been provided on top of the new 3½ million gallon water reservoir on Foster Avenue, near the Recreation Centre . . . a good example of multi-purpose municipal facilities.

Coquitlam Phone Numbers

Municipal Hall	526-3611
Fire Department (Emergency)	939-1122
Fire Department (Non-Emergency)	526-3611
Police (RCMP)	941-3461
Health Unit	936-3441
Emergency Calls, Relative To Waterworks, Roads, Sewers Or Drainage After Regular Working Hours	526-3611
Social Recreation Centre	939-9264
Sports Centre	936-0491
Chimo Pool	939-4631
Place Des Arts	526-7522